

# Ellesmere Port



Methodist Collection of Modern Art  
**FREE entry**



6 March – 27 April 2014

# Welcome to The Port Arts Festival and Fringe 2014

## Celebrating community and creativity in Ellesmere Port

Ellesmere Port has reason to celebrate. It is a place rich with stories, woven through with people who know the Port as home. 2014 is a year to look back and give thanks for the foundations of community, often established through hard work and sacrifice.

As the country prepared for war in 1914, new industries were being established along the water front and railway track. The footballer, Joe Mercer, was born in Ellesmere Port. The shops along the central thoroughfare of Whitby Road were just a couple of years old in 1914, when the street was described as 'flourishing and cheerful'. 1914 was the year when Trinity Methodist Church opened in the town centre.

One hundred years later, after much fundamental change in Ellesmere Port, the reconfiguration of Trinity as church in the community has been symbolic of a town-wide transformation. A rich heritage has been shared by the people, encompassing both the prosperity of industrial growth and the lean years of structural and economic change.

As 2014 unfolds, a unique opportunity has been created to draw on the capacity of art to change public

perceptions and develop community with a positive mindset which looks hopefully to the future.

Between 6th March - 27th April 2014, 'Along the Way' will exhibit The Methodist Collection of Modern Art at four venues in the town to mark Trinity's centenary on Whitby Road. 'Along the Way' has been the catalyst for establishing a Fringe Festival which incorporates art, music, community tapestry, drama, creative workshops and a schools programme. The Port Arts Festival 2014 will reflect themes of reconciliation, peace and forgiveness.

You are invited to take part, to come and see, to stop and chat, to listen and learn. It's time to express what it means to be part of this community and to celebrate being the people of 'Our Place'

**The Worshipful The Mayor of  
Ellesmere Port Bob Crompton**

Arts Festival Logo  
created by  
Foundation Art  
and Design  
Diploma student  
at West Cheshire  
College,  
Michael Holden.



# The Methodist Collection of Modern Art Main Event 'Along the Way'

The Methodist Modern Art Collection features over 55 works of significant modern Christian art, including some by Graham Sutherland, Eric Gill, Elisabeth Frink, William Roberts and Patrick Heron.

Most of the pictures depict scenes from the life and teaching of Christ. Some artists were or are believing Christians, others not.

Works are still being acquired to ensure that the ideas and concerns of today's artists are represented in the Collection.

Ellesmere Port is a town in regeneration and resurgence, defined as a mission priority for the Wirral Methodist Circuit. We believe this exhibition will significantly help the community "Along the Way" in living out our priorities as well as raising the profile of the arts in the town and the town itself.

**Reverend Graham Kent Secretary  
Methodist Collection of Modern Art**

Bottom Left: 'The supper at Emmaus' by Roy de Maistre, Bottom Right: 'The mocking of Christ' by Peter Rogers



To view the whole art collection online, please visit  
[www.methodist.org.uk/artcollection](http://www.methodist.org.uk/artcollection)

## Trinity Ellesmere Port

**Trinity Methodist Church  
Ellesmere Port  
CH65 8AA**



'The Washing of the Feet' by Ghislaine Howard, exhibited at Trinity.

Opening dates/times:

Monday to Friday, 9.30am—3pm  
Tuesdays and Thursdays, 5pm—8pm  
Saturday, 9.30am—12.30pm  
Saturday and Sunday afternoons by  
prior arrangement for groups.

Tel: **0151 355 5379**

Email: [info@trinityellesmereport.org.uk](mailto:info@trinityellesmereport.org.uk)

Visit: [www.trinityellesmereport.org.uk/](http://www.trinityellesmereport.org.uk/)



The **Methodist** Church 

# Paperboat Gallery

**5 Whitby Road  
Ellesmere Port  
CH65 8AA**

Opening dates/times:

Tuesday to Friday,

10am—5pm

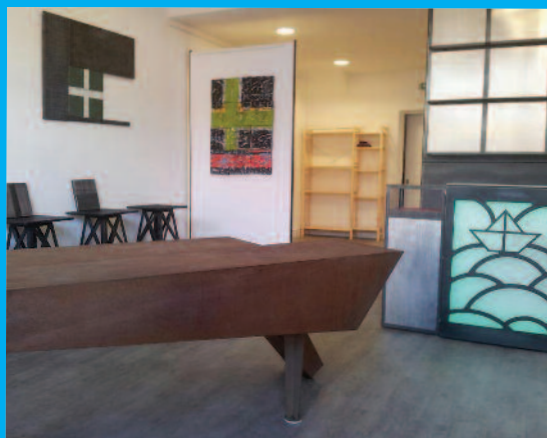
Saturday, 10am—4.30pm

Tel: **0151 378 1794 / 07533 809 839**

Email: **sonja.mossolega@hotmail.co.uk**

Visit: [www.paperboatgallery.org.uk](http://www.paperboatgallery.org.uk)

'Dalit Madonna' by Jyoti Sahi (top right), exhibited at Paperboat Gallery



'Christ enters Jerusalem', by Sadao Watanabe (above), exhibited at Paperboat Gallery





## West Cheshire College



'Rest on the Flight to Egypt' by Nicholas Mynheer, one of many which can be seen at West Cheshire College.

**West Cheshire College**  
**Off Sutton Way**  
**Ellesmere Port**  
**CH65 7BF**



Opening dates/times:  
Monday to Thursday 10am-8pm  
Friday 10am-3pm  
During the Easter break, 7-21 April  
10am-5pm.

Tel: **01244 656 100**

Visit: [www.west-cheshire.ac.uk](http://www.west-cheshire.ac.uk)  
Including Whitby High School artwork  
based on the Methodist Collection of  
Modern Art.



## University Church of England Academy



**164 Whitby Road  
Ellesmere Port  
CH65 8AA**

Opening dates/times: March 11,  
13, 18, 20, 25 and 27, April 1, 3,  
22, 24 open 6pm—8pm 15 March  
and 5 April open 10am— 12pm  
Schools by prior arrangement.

Tel: **0151 350 6000**

Email: **info@UCEAcademy.org**

Visit: [www.universityce  
academy.org](http://www.universityce<br/>academy.org)



'Cross over the City' by Michael Edmonds, one of many at the UCE Academy.



## Continual Events

### 'Then and Now' Photographic Exhibition

National Waterways Museum,  
5 March-29 April

Comparison of the past with the present with some rare and new images, contributed by the local history and photographic societies and West Cheshire College students.

Picture (below) courtesy of The Ellesmere Port Local and Family History Society



Pictures (above) courtesy of The Waterways Archive/Canal & River Trust



Picture (above) courtesy of The Waterways Archive/Canal & River Trust

Picture (top) courtesy of Liz Houghton, student at West Cheshire College

### Various other events

at the National Waterways Museum.

Please visit [canalrivertrust.org.uk/national-waterways-museum](http://canalrivertrust.org.uk/national-waterways-museum) or call 0151 355 5017 for more information.



## Thursday 6 March

**Official Opening of The Port Arts Festival 2014**, including 'Along the Way' 'Anthem for the Port' by the Fireflies. Trinity, 6.30 for 7pm  
BSL interpreted

## Friday 7 March

**Colin Parry Peace campaigner talks about the Foundation for Peace and the themes of peace, forgiveness and reconciliation.**

The Port Arcades Shopping Centre, 6.45pm, Free tickets in advance only from Plus Dane, Council office, Trinity and The Port Arcades Shopping Centre

## Saturday 8 March

**Loose Cannons -Supper Theatre Evening. 'The Visitor', a Play for Remembrance.**

Trinity, Supper from 7pm  
Tickets £10



## Saturday 8 March

**Peace and Joy.** Join the Paperboat Gallery team making doves in The Port Arcades. The doves will become part of a large community art piece that will be on display later in the month. The Port Arcades Shopping Centre, 11.30am-3pm

## Sunday 9 March

**Big Sing with Alison Adam of the Wild Goose Resource Group**

Trinity, 4pm  
BSL interpreted

## Monday 10 March

**Lent Bible Study**, including 'Along the Way'. Trinity, 7.30pm

## Wednesday 12 March

**Hope Journey:** Encounters Along the Way. Trinity, 10am—12pm

## Friday 14 March

**Unveiling of the Cheshire Young Carers Peace and Remembrance Tree by the Mayor**  
FabLab, 11am



**Friday 14 March**

**Peace and Joy**

Unveiling of Paperboat Gallery  
'Peace and Joy' Community Artwork  
by the Mayor, The Port Arcades  
Shopping Centre, 12pm

**Saturday 15 March**

**Add your own remembrance  
message to the Peace and  
Remembrance Tree**

FabLab, 10am—5pm

**Monday 17 March**

**The Bus Stop**

Trinity, 1pm—3pm

**Lent Bible Study**, including  
'Along the Way'  
Trinity, 7.30pm

**Wednesday 19 March**

**Hope Journey**

Encounters Along the Way  
Trinity, 10am—12pm



**Friday 21 & Saturday 22 March**

**Add your own remembrance  
message to the Peace and  
Remembrance Tree**

FabLab, 10am—5pm



'Peace Embassies', Quaker Tapestry Scheme

**Friday 21 & Saturday 22 March**

**Quaker Tapestry and Stitch in Time**

Several original pieces from Kendal exhibited, speak with the curator, find out about community storytelling, and try some stitching,  
Trinity

**Monday 24 March**

**The Bus Stop**

Trinity, 1pm—3pm

**Lent Bible Study**, including  
'Along the Way'  
Trinity, 7.30pm

**Tuesday 25 March**

**Unveiling of Circle Cabs Artwork**

3 Princes Road, 11am  
A New Beginning' by Silent Bill

**Wednesday 26 March**

## Hope Journey

Encounters Along the Way, Trinity,  
10am—12pm



**Wednesday 26 March**

## 'Rest on the Flight to Egypt' by

**Nicholas Mynheer** - Meet the Artist

West Cheshire College, 2pm  
BSL interpreted

**Friday 28 and Saturday 29 March**

## Add your own remembrance message to the Peace and Remembrance Tree

FabLab, 10am—5pm

**Monday 31 March**

## The Bus Stop

Trinity, 1pm—3pm

**Lent Bible Study**, including

'Along the Way'

Trinity, 7.30pm

**Wednesday 2 April**

## Hope Journey

Encounters Along the Way  
Trinity, 10am—12pm

**Thursday 3 April**

## Ghislaine Howard reflects on her painting 'The Washing of the Feet'

- Meet The Artist Supper starting at 5pm, illustrated talk from 7pm, Trinity, BSL interpreted

**Friday 4 and Saturday 5 April**

## Add your own remembrance message to the Peace and Remembrance Tree

FabLab, 10am—5pm

**Sunday 6 April**

## 50th Birthday of Wirral Methodist Housing

Trinity, 3pm



**Monday 7 April**

## The Bus Stop

Trinity, 1pm—3pm

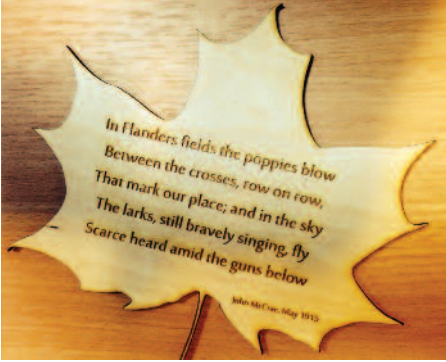
**Lent Bible Study**, including

'Along the Way'

Trinity, 7.30pm

**Thursday 10 and Friday 11 April**  
**Boaty Theatre Company presents**  
**'Fate'**

National Waterways Museum,  
7pm Tickets £4



**Saturday 12 April**  
**Add your own remembrance**  
**message to the Peace and**  
**Remembrance Tree**

FabLab, 10am—5pm

**Saturday 12 and Sunday 13 April**  
**Boaty Theatre Company presents**  
**'Forget Me Not'**

National Waterways Museum,  
7pm Tickets £4

**Sunday 13 April**  
**Worship for Palm Sunday**

Trinity, 10.30am

**Monday 14 April**  
**The Bus Stop**

Trinity, 1pm—3pm

**Lent Bible Study**, including  
'Along the Way'  
Trinity, 7.30pm

**Thursday 17 April**  
**Faith, Belief & Spirituality in**  
**Contemporary Art Lecture by**  
**Adrian Sumner**,

Paperboat Gallery, 7pm  
BSL interpreted  
Tickets including drink £3



'Christ of Saint John of the Cross', by Salvador Dalí

# Fringe

**Friday 18 April**

**An Evening of Acoustic Music,  
Comedy and Poetry**

presented by Ben Powell,  
Montague Cafe, 7.30pm—10pm

**Friday 18 and Saturday 19 April**

**Add your own remembrance  
message to the Peace and  
Remembrance Tree**

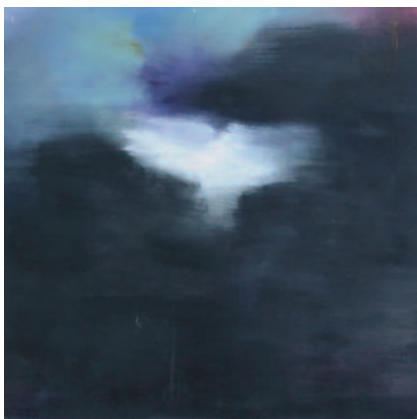
FabLab, 10am—5pm

**Saturday 19 April**

**Easter Trail, Dove Making**

Whitby Park, 1pm—3pm

Whitby Hall open for tea and coffee



'Pentecost' by John Brokenshire

**Sunday 20 April**

**Worship for Easter Day**

Trinity, 7.30am, with breakfast  
available, and 10.30am

**Monday 21 April**

**The Bus Stop**

Trinity, 1pm—3pm

**Wednesday 23 April**

**Cross Over the Town**

Celebration with young people working  
on issues of restorative justice  
Trinity, 11.30am

**Friday 25 April**

**Add your own remembrance  
message to the Peace and  
Remembrance Tree**

FabLab, 10am—5pm

**Saturday 26 April**

**Peace and Remembrance Tree**

Closing Ceremony of the Peace and  
Remembrance Tree  
FabLab, 12pm - 1pm

**Sunday 27 April**

**Last Day of Exhibition**



'Crucifix and  
Candles' by  
Patrick Heron



## Peace and Reconciliation

by Owen Mageean, exhibited at Civic Way office



## Ellesmere Port Stitch in Time Tapestry Display

Ellesmere Port Library,  
7 March-26 April

Every Wednesday members of group stitching at Library 12.30 onwards

## Alongside The Tracks

Take time to view the artwork at Ellesmere Port, Overpool & Little Sutton railway stations created by young people from local high schools.



# Ellesmere Port Town Centre Map



## Methodist Collection of Modern Art venues:

Paperboat Gallery, 5 Whitby Road  
Trinity, Whitby Road  
University Church of England Academy, Whitby Road  
West Cheshire College, Sutton Way

## Transport & mobility:

Bus exchange  
DICE, Shopmobility  
Merseyrail railway station  
Motorway Junction 9

## Other venues:

Circle Cabs, 3 Princes Road  
Civic Way office  
Ellesmere Port Library, Civic Square  
Ellesmere Port railway station  
FabLab, 53 Whitby Road  
Montague Cafe, 39 Whitby Road  
National Waterways Museum  
The Port Arcades Shopping Centre  
Whitby Hall, Whitby Park

## Public toilets:

Public toilets at Town Centre Car Park

## Information point and toilets:

Healthy Living Centre, Civic Square

For more information please contact  
[Jochem.hollestelle@cheshirewestandchester.gov.uk](mailto:Jochem.hollestelle@cheshirewestandchester.gov.uk)  
[www.theportartsfestival.wordpress.com](http://www.theportartsfestival.wordpress.com)

# Thank you for your support



**Brabners**



**LOVELL**

**EPL&FHS**

Ellesmere Port Flower Club will be involved with flowers which will complement the Methodist Collection of Modern Art.